

# Compal Confidential

## TESLA 3A DIS I/B Schematics Document

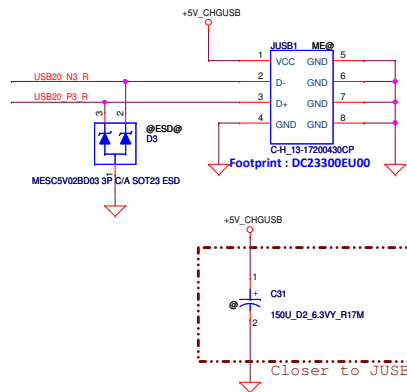
AIVS3  
LS-C311P

2014-09-25

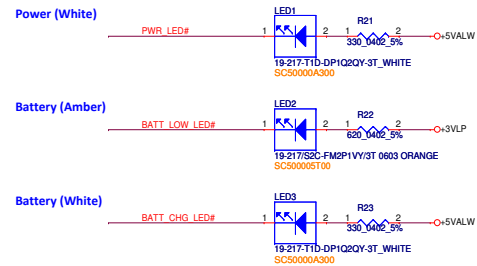
REV : 0.1

Security Classification	Compal Secret Data			Compal Electronics, Inc.		
Issued Date	2011/06/24	Deciphered Date	2012/07/12	Title Cover Page		
THIS SHEET OF ENGINEERING DRAWING IS THE PROPRIETARY PROPERTY OF COMPAL ELECTRONICS, INC. AND CONTAINS CONFIDENTIAL AND TRADE SECRET INFORMATION. THIS SHEET MAY NOT BE TRANSFERRED FROM THE CUSTODY OF THE COMPETENT DIVISION OF R&D DEPARTMENT EXCEPT AS AUTHORIZED BY COMPAL ELECTRONICS, INC. NEITHER THIS SHEET NOR THE INFORMATION IT CONTAINS MAY BE USED BY OR DISCLOSED TO ANY THIRD PARTY WITHOUT PRIOR WRITTEN CONSENT OF COMPAL ELECTRONICS, INC.				Size C	Document Number LS-C311P	Rev 0.1
Date: Thursday, September 25, 2014				Sheet	1	of 3

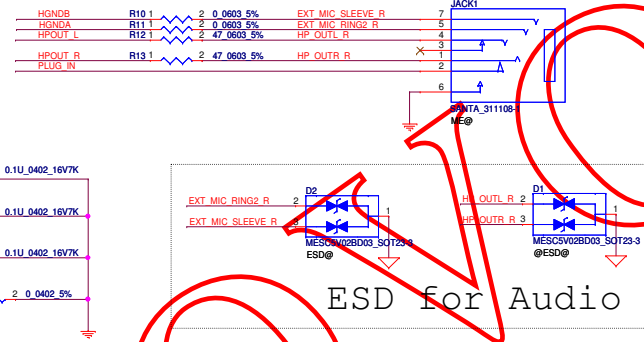
## USB20 CONN



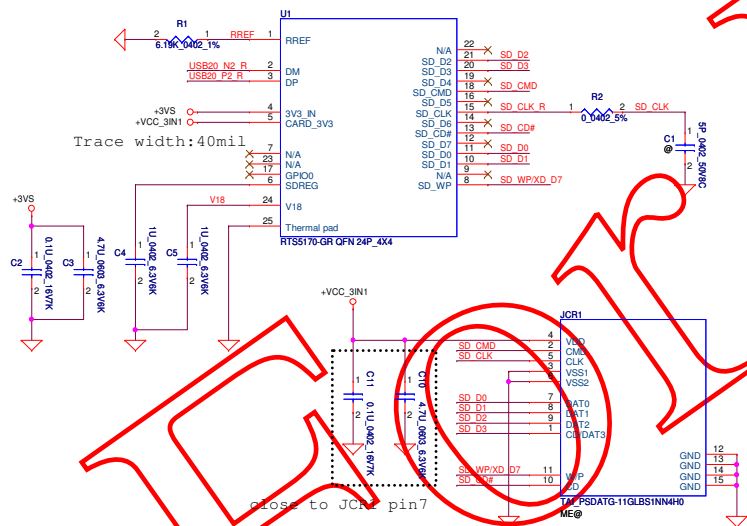
## Power LED



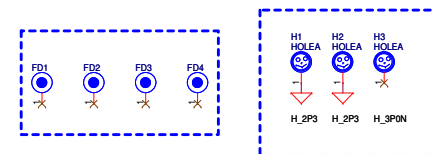
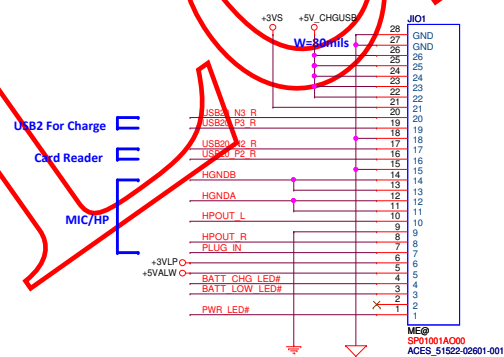
## AUDIO JACK



## 2 in 1 Card Reader



## I/O CONN



Security Classification	Compal Secret Data			<b>Compal Electronics, Inc.</b> <b>IO/SD/Audio/USB2 Conn.</b>	
Issued Date	2011/06/24	Deciphered Date	2012/07/12	Title	
THIS SHEET OF ENGINEERING DRAWING IS THE PROPRIETARY PROPERTY OF COMPAL ELECTRONICS, INC. AND CONTAINS CONFIDENTIAL AND TRADE SECRET INFORMATION. THIS SHEET MAY NOT BE TRANSFERRED FROM THE CUSTODY OF THE COMPETENT DIVISION OF R&D DEPARTMENT EXCEPT AS AUTHORIZED BY COMPAL ELECTRONICS, INC. NEITHER THIS SHEET NOR THE INFORMATION IT CONTAINS MAY BE USED BY OR DISCLOSED TO ANY THIRD PARTY WITHOUT PRIOR WRITTEN CONSENT OF COMPAL ELECTRONICS, INC.				Size	Rev
				Document Number	0.1
				LS-C311P	
Date	Thursday, September 25, 2014 15:00			2	of 3

Item	Reason for change	PG#	Modify List	Date	Phase
1					
2					
3					
4					
6					
7					
8					
9					
10					
11					
12					
13					
14					
15					
16					

Security Classification		Compal Secret Data		Title	
Issued Date	2011/06/24	Deciphered Date	2012/07/12	PIR (HW)	
THIS SHEET OF ENGINEERING DRAWING IS THE PROPRIETARY PROPERTY OF COMPAL ELECTRONICS, INC. AND CONTAINS CONFIDENTIAL AND TRADE SECRET INFORMATION. THIS SHEET MAY NOT BE TRANSFERRED FROM THE CUSTODY OF THE COMPETENT DIVISION OF R&D DEPARTMENT EXCEPT AS AUTHORIZED BY COMPAL ELECTRONICS, INC. NEITHER THIS SHEET NOR THE INFORMATION IT CONTAINS MAY BE USED BY OR DISCLOSED TO ANY THIRD PARTY WITHOUT PRIOR WRITTEN CONSENT OF COMPAL ELECTRONICS, INC.				Size Custom	Document Number
				Date: Thursday, September 25, 2014	Rev 0.1
				Sheet 3 of 3	